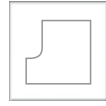




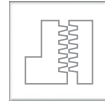
CNC



Grooving & Sizing



Profiling & Chamfering



Jointing & Rebating



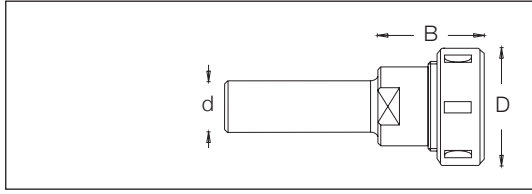
Frame & Panel door



Carving

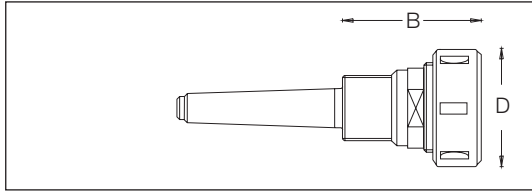


Clamping Systems & Adapters



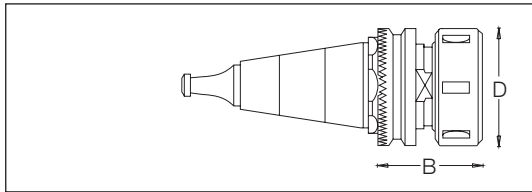
Straight Adapter for Er Collets

Code No.	Adapter standard	øD	B	ød	Collet standard
642 006		50	55	20	ER32
642 007		63	55	25	ER40



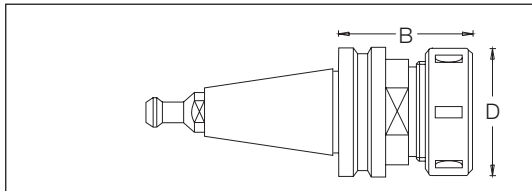
Morse Adapter for Er 32 Collet

Code No.	Adapter standard	øD	B	Collet standard
642 005	M2	50	60	ER32



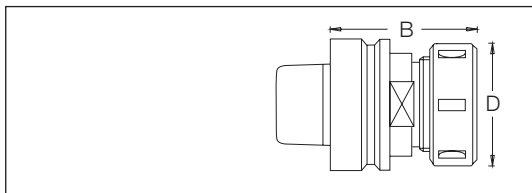
ISO Tool Holder with Pull Stud for Morbidelli, SCM.Machines

Code No.	Adapter standard	øD	B	Collet standard
641 010	ISO 30	50	55	ER32



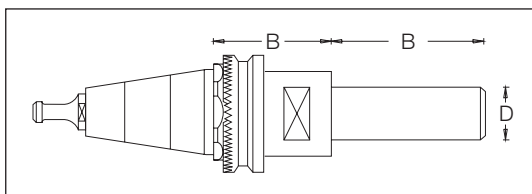
ISO Tool Holder

Code No.	Adapter standard	øD	B	Collet standard
641 011	ISO 30	50	42	ER32
641 012	ISO 30	63	55	ER40
641 021	ISO 40	50	63	ER32
641 019	ISO 40	63	73	ER40



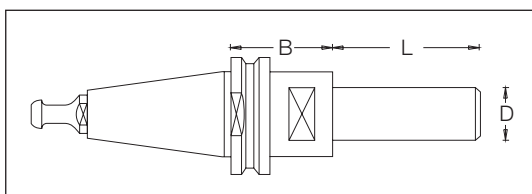
HSK Tool Holder

Code No.	Adapter standard	øD	B	Collet standard
641 031	HSK63	50	76	ER32
641 030	HSK63	63	76	ER40



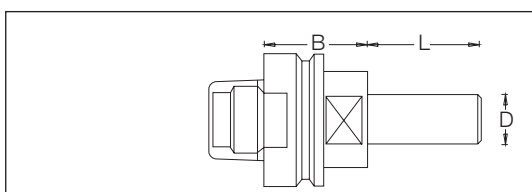
ISO30 Tool Holder with Arbor for Morbidelli Machines

Code No.	Adapter standard	øD	B	L
643 011	ISO 30	30	35	70
643 012	ISO 30	30	35	100



ISO Tool Holder with Arbor

Code No.	Adapter standard	øD	B	L
643 020	ISO 30	30	35	70
643 021	ISO 30	30	35	100

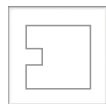


HSK Tool Holder with An Arbor

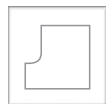
Code No.	Adapter standard	øD	B	L
643 001	HSK63	30	33	55
643 002	HSK63	30	33	100



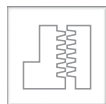
CNC



Grooving & Sizing



Profiling & Chamfering



Jointing & Rebating



Frame & Panel door

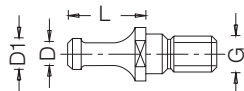


Carving

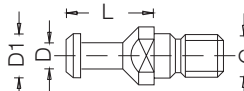


Clamping Systems & Adapters

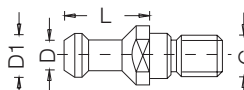
Pullstud for Machines



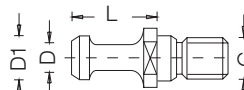
For machines	Adapter	Code No.	øD1	øD	L	G
Morbidell, SCM	ISO 30	650 010	8.5	6.5	22	M10



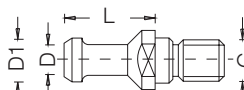
Busellato, weeke, bulleri, maka,	ISO 30	650 011	13	9	24	M12
Cosmec, reichenbacher	ISO 40	650 020	19	14	26	M16



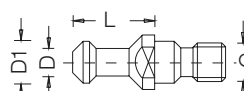
Alberti, vitap, masterwood	ISO 30	650 013	13	9	24	M12
----------------------------	--------	---------	----	---	----	-----



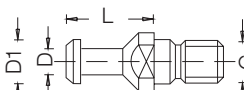
Esseteam	ISO 30	650 014	12	8	24	M12
----------	--------	---------	----	---	----	-----



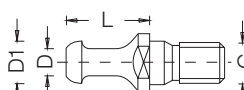
CMS	ISO 30	650 015	12.8	9	24	M12
-----	--------	---------	------	---	----	-----



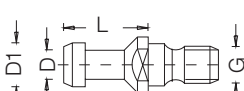
Belotti	ISO 30	650 016	13	9	23	M12
---------	--------	---------	----	---	----	-----



Biesse	ISO 30	650 017	12	8	24	M12
--------	--------	---------	----	---	----	-----



Biesse Masterwood	ISO 30	650 018	12	8	24	M12
-------------------	--------	---------	----	---	----	-----



Komo	BT 30	650 030	13	9	24	M12
------	-------	---------	----	---	----	-----



Shoda (BT30-BT40), heian (BT35)	BT 30	650 031	11	7	23	M12
	BT 35	650 040	13	8.5	28	M12
	BT 40	650 050	15	10	35	M16

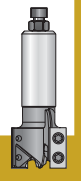


Index

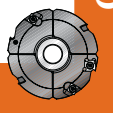
Sawing



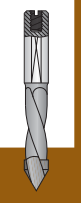
CNC



Cutting



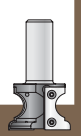
Drilling



Routing



Custom Tooling

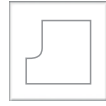




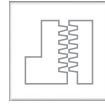
CNC



Grooving & Sizing



Profiling & Chamfering



Jointing & Rebating



Frame & Panel door

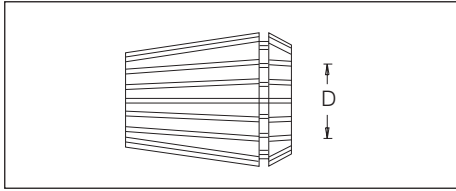


Carving



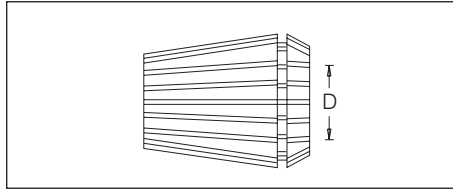
Clamping Systems & Adapters

Collets for ER32 Nut



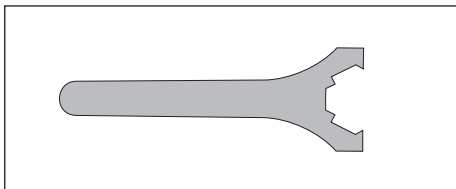
øD	Code No.
2-3	615 040
3-4	615 041
4-5	615 042
5-6	615 043
6-7	615 044
7-8	615 012
8-9	615 046
9-10	615 010
10-11	615 048
11-12	615 049
12-13	615 009
13-14	615 051
14-15	615 008
15-16	615 053
16-17	615 054
17-18	615 055
18-19	615 056
19-20	615 011
Complete set for ER32 collets	615 090

Collets for ER40 Nut



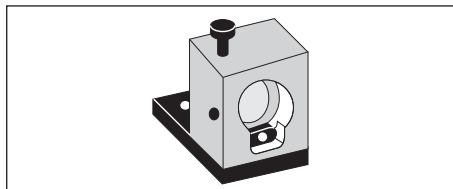
øD	Code No.
3-4	615 060
4-5	615 061
5-6	615 062
6-7	615 063
7-8	615 064
8-9	615 065
9-10	615 007
10-11	615 031
11-12	615 032
12-13	615 006
13-14	615 070
14-15	615 005
15-16	615 030
16-17	615 073
17-18	615 074
18-19	615 004
19-20	615 003
20-21	615 077
21-22	615 078
22-23	615 079
23-24	615 080
24-25	615 002
25-26	615 001
Complete set for ER40 collets	615 091

Key



øD	Code. No.
For ER32 nut	631 004
For ER40 nut	631 003

Tightening device



øD	Code No.
For ISO30 tool holder	642 001
For ISO40 tool holder	642 002
For HSK63 tool holder	642 003

Index

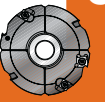
Sawing



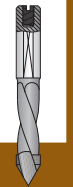
CNC



Cutting



Drilling



Routing



Custom Tooling

